



École Élémentaire St. Paul Elementary

Live Learn Lead like Jesus
Vivez Apprenez Menez comme Jésus

November 2023

Office Hours: 8:00 a.m.—4:00p.m.

Monday—Friday



Absentee Text only: 780-614-4612



Email: ses@sperd.ca



Phone: 780-645-3537

Absentee Line: 780-645-2935



École Élémentaire St. Paul Elementary SPERD



Stpauleeducation.ab.ca "Bus Status"

Download on Google Play and
the App Store



Photo Re-takes are

November 6, 2023

At 9:00 a.m

School Council

Next Meeting is November 21st

At 7:00pm

Everyone is welcome!



In Flanders Fields

In Flanders fields the poppies blow
Between the crosses, row on row,
That mark our place; and in the sky
The larks, still bravely singing, fly
Scarce heard amid the guns below.

We are the Dead. Short days ago
We lived, felt dawn, saw sunset glow,
Loved and were loved, and now we lie
In Flanders fields.

Take up our quarrel with the foe:
To you from failing hands we throw
The torch; be yours to hold it high.
If ye break faith with us who die
We shall not sleep, though poppies grow
In Flanders fields.

- Lieutenant Colonel John McCrae

NOTICE TO PARENTS AND VISITORS



**A Reminder: All school doors
except the main entrance
are locked.**

ALL PARENTS AND VISITORS

are asked to use the Main doors and please
check in at the office. We ask that you do not
proceed to your child's class without checking
at the office first.

*Also note that SPECS School has
video recording in effect.*



**REPORT
CARDS GO
HOME
November 22nd**



November 23rd

Watch for an email to book an appointment. (Link to book will be in the email and on our website.)

PLAYGROUND FUNDRAISING

Our parent Fundraising Council is continuing to raise funds for additional playground equipment. The following is a tentative plan for acquiring the new equipment.

Some of the fundraising initiatives planned for the 2023/24 school year are as follow:



- **Fall bacon fundraiser - completed**
- **Halloween dance - completed**
- **Spring bacon fundraiser - (March 2024)**
- **Spring Fling dance - (Spring 2024?)**
- **Cash Raffle - (Date TBD)**

3 Year Plan (Tentative)

2023/24

- Select a play structure (input from students/staff)
- Obtain quotes
- Prepare a donation package - distribute to individuals, businesses & municipalities, if ready
- Run fundraisers

2024/25

- Continue to solicit donations
- Apply for grants
- Continue fundraising efforts

2025/26

- Continue fundraising efforts
- Install new playground structure (summer 2026)

The cold weather is here!

- Please send your child dressed to go outside each day—extra clothes are a great idea.
- Label all of your child's clothing and boots to help them identify their belongings.
- Your child needs indoor shoes to help keep their feet dry and our school clean.
- Have your child visit the Lost and Found table regularly
- Wash your hands often to stop the spread of colds and flu!



A REMEMBRANCE DAY
CELEBRATION WILL BE ON
NOVEMBER 8, 2023
AT 10:45 AM
WE REMEMBER OUR HEROES.



Catholic Education Sunday November 5, 2023



HOW SICK IS TOO SICK FOR SCHOOL?



SEND TO SCHOOL

- A runny nose or just a little cough but no other symptoms.
- Sore throat but no other symptoms.
- No fever in the past 24 hours without fever-reducing medicine.
- No vomiting or diarrhea for 24 hours.



KEEP AT HOME

- Fever higher than 100.4 degrees F (38 degrees C).
- Sore throat, with other symptoms such as a persistent cough.
- Vomiting or diarrhea in the past 24 hours.
- Eyes are pink and crusty.
- Has been exposed to an illness where isolation is recommended.



MEET THE INCLUSIVE EDUCATION STUDENT SUPPORTS TEAM

SHA



DIRECTOR

DARLENE



CONTRACTED
SLP

VOON



SPERD OT

KRISTIN



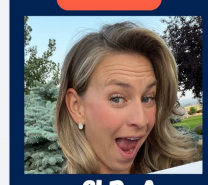
CONTRACTED
OT

IRMGARD



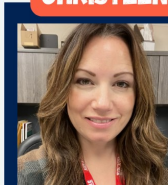
CONTRACTED
SLP

MANDY



SLP-A

CHRISTEEN



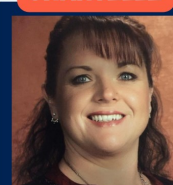
SLP-A

MICHELLE



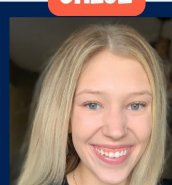
COORDINATOR

CHANTELLE



ASSISTANT

CHLOE



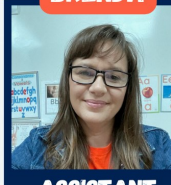
ASSISTANT

GAIL



ASSISTANT

BRENDA



ASSISTANT





St. Paul Education

Extreme Weather: Is my child's bus running? Coming home early?

Throughout the winter, weather and road conditions are constantly monitored with the safety of students and staff at the center of all of our decisions. We strive to inform parents of any delays or cancellations as quickly as possible. Here's how you may be notified:

- Bus driver contact
- Call/text from your school
- Local radio stations
- ALERTUS App
- Social Media (Facebook, Twitter and Instagram)
- School/Division website posting <https://www.stpauleducation.ab.ca/>

How we decide:

When temperature and/or wind chill is -40°C or colder, buses are cancelled. Notice may be given the night before or in the morning.



Buses may run in the afternoon during extreme cold weather under certain circumstances.



Weather checks start very early with The Weather Network and phone calls to designated staff living in each local area.



Even if buses are cancelled, schools remain open.

- If your child attends: meaningful learning still occurs
- If your child is absent: efforts will be made to ensure they do not fall behind

If a decision is required around temperature and/or road conditions, the Director of Transportation/Facilities consults with:

- Local bus drivers
- School principals
- Superintendent of Schools



Decision is based on:

- local road conditions
- RCMP travel advisories
- weather and wind warnings
- local municipality input

Your bus driver also has complete discretion to cancel a route should they feel travel is unsafe.

Parents always have the final say about their child's safety and well-being and can always choose whether or not to have their child take the bus.



The Nations of Saddle Lake, Whitefish Lake and Frog Lake make independent decisions about their buses. Please contact them directly for any questions regarding their transportation policies.



Fall Book Fair is a Huge Success!

Wow! We sold a lot of books at our book fair recently! Students and their parents bought over **\$7,000.00** worth of books. With the book fair profit, we were able to select over **\$800.00** of free books for our school library learning commons. Thank you to everyone for supporting our book fair and for keeping the students stocked up on new reading materials!



If you *don't* snooze, you lose!

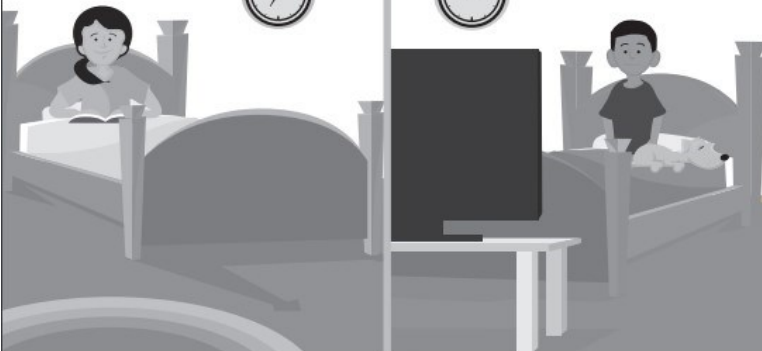
DO

- Go to bed around the same time every night.
- Follow a calm bedtime routine, like taking a bath or reading a book.
- Get comfy – not too hot or too cold.
- Talk with a parent or guardian if something is bothering you.
- Sleep in a **quiet** room.
- Sleep in a **dark** room.



DON'T

- Watch TV, play video games, or use a phone, tablet, or computer right before bedtime.
- Play loud music or watch a scary movie.
- Sleep with your dog, cat, or goldfish.
- Drink soda, iced tea, or other drinks with caffeine.
- Sprinkle sugar on your head to have sweet dreams!



Most kids need **10 to 11 hours** of sleep each night to help them do their best at school.

SCHOOL FEES

SCHOOL FEES FOR THE 2023-2024 SCHOOL YEAR ARE NOW DUE. CASH OR CHEQUE PAYMENTS CAN BE MADE ANY TIME AT THE OFFICE OR SIGN UP FOR

SchoolCash Online



Register for SchoolCash Online

Registration is fast, safe, and convenient.





NOVEMBER

2023

Sunday	Monday	Tuesday	Wednesday	Thursday	Friday	Saturday
			1 Day 4  All Saints' Day	2 Day 5	3 Day 6	4
5 Catholic Education Sunday	6 Day 1 	7 Day 2	8 Day 3 Remembrance Day Service 10:45 a.m. Wear Red 	9 Day PLC Day No School	10 Schools Closed	11 
12	13 In Lieu of Remembrance Day No School	14 Day 4	15 Day 5 Hot lunch ordering opens	16 Day 6	17 Day 1	18
19	20 Day 2	Day 3 Hot lunch ordering closes Parent Council Meeting 7:00 p.m.	22 Day 4 Report Cards go Home  Grade 3 Swimming Lessons	23 Day 5 Parent-Teacher Conferences	24 Day 6	25
26	27 Day 1  Grade 3 Swimming Lessons	28 Day 2	29 Day 3	30 Day 4	Upcoming Events: December 19—Christmas Concert	

SPECS is an ALLERGY AWARE Zone